

Remote Indicator Unit

Remote Fire Detector
Indicator Units

AS8201-00 (Round)

AS8202-00 (Square)



Standard Features

- High brightness red LED indicators for reliability and low power consumption.
- Wide viewing angle
- LEDs flash alternately to easily attract attention
- Units to fit to standard gang or round electrical back boxes.
- Compatible with conventional and addressable detectors
- Printed with "FIRE ALARM IN CONCEALED SPACE" as standard
- Custom printing and languages available on request.

Product Overview

The Remote Indicator LED Units allow the LED associated with a fire detector to be extended to a visible location in areas where the detector itself is concealed.

Two bright, alternately flashing LED indicators with wide angle diffusers ensure that the indicators are immediately visible in any sized room.

Special ceiling mounting clip available.

Fixing screws supplied with each unit.

The round version fits into a BESA box and the square version fits into a standard electrical single gang back box.

Connections for both conventional and addressable detectors.

Ceiling Mounting Clip

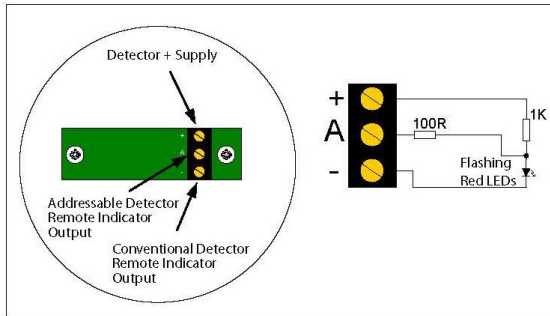
Product Overview

Our new and unique ceiling mounting clip provides fast and secure fixing of our round Remote Indicator unit to ceilings.

Particularly good for fragile ceilings such as suspended ceilings.

Connection Details

Always refer to the detector manufacturers detector base instructions before connecting the Remote Indicator Unit and only use the connections described. Remote indicators that are not connected as per the instructions may cause the detector to be inoperative.



Technical Specifications

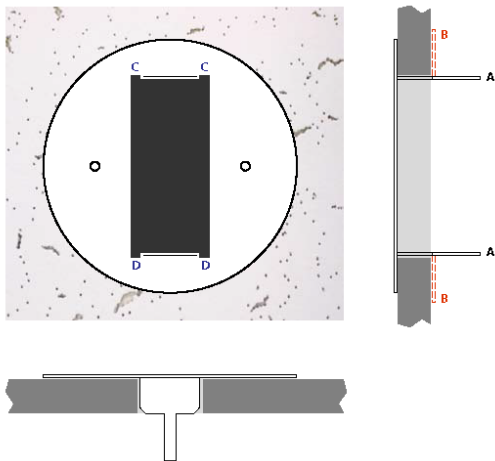
Construction: mild sheet steel
Dimensions: 3.4"H x 3.4"W x 1.18"D
IP Rating: IP40
Finish: Epoxy powder coated
Color: White
Current Consumption: 20 milliamps max at 24V DC
Operating temperature range: 23°F to 122°F
Operating humidity range: <95% (non condensing)
Voltage: 15 to 30V DC

Ordering Codes

Part Number	Description
AS8201-00	Round Remote Indicator
AS8202-00	Square Remote Indicator
AS8201-01	Ceiling Mounting Clip (fits Round Remote Indicator only)

Ceiling Mounting Clip VF8202-01*

Fixing Details



* Fits Round Remote Indicator Only (VF8201-00)

1. Make a hole in the ceiling using the most suitable method below:

- Using a standard 2.5in diameter hole saw.
- Use an open ended saw to cut a 2.4in X 1.1in slot.
- If fixing to a ceiling tile, gently push the clip through the tile and use a stanley knife to cut between points C and D (both sides).

2. Fold back the two tabs marked A into position B, locking the ceiling clip into position.

3. Use the 2 self-tapping screws provided to fit the Remote Lamp plate.