

GUIDE - AS1593-xx

Graphical PC User Interface For Fire Detection Systems



Standard Features

- Choice of text, graphic, event list display when an event occurs
- Versatile event analysis
- Total history archive
- Easy to program
- Secure system
- Cost effective compared to other systems
- Simple to use
- Unlimited map linking & zoom capability
- Support for 100's of graphics
- Display and control for multiple panels
- Event history explore and export to text or HTML documents

Product Overview

Supreme fire control panels can send data to, and be controlled by, the Guide system providing a single point of control for all alarms.

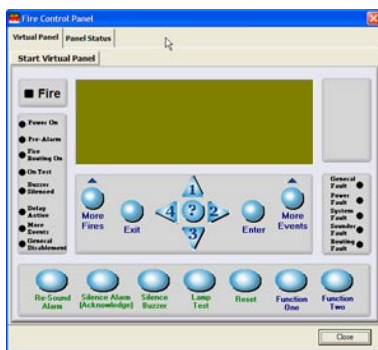
The powerful 32-bit program features a standard Windows look and feel and runs under Windows® XP, Vista or Windows® 7.

The system is highly configurable in terms of the style of presentation so that the end user can be presented with maps, text, photographs, audio or a combination of all as required.

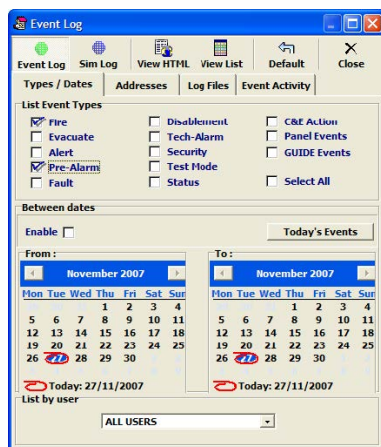
User profiles allow the system manager to control the options available to each individual system user.

A comprehensive history logging and reporting system allows analysis of events and trends to be identified to reduce unwanted alarms.

Easy to program and simple to use, Guide provides a cost effective solution for fire alarm management at many levels.



Virtual Panel - allows direct control



Powerful Event log filtering

Ordering Codes

Part Number	Description
AS1593-00	GUIDE software - 1 node
AS1593-00	GUIDE software - 2-4 nodes
AS1593-02	GUIDE software - 5-8 nodes
AS1593-03	GUIDE software - 9-16 nodes
AS1593-04	GUIDE software - 17-32 nodes
AS1593-05	GUIDE software - 33-64 nodes

Technical Specifications

	Recommended Minimum	Notes
Processor	Intel Pentium 1Ghz	The faster the better, 2Ghz will provide future proofing
Operating system	Windows® XP/Vista	Will operate under Windows® 2000
Memory	256MB minimum	The larger the better
Hard disk	10GB minimum	20GB would be better
Graphics	1024 x 768 16M colors	The driver must allow this mode with large fonts. Separate Graphics card with 256MB graphics memory recommended
Sound card	Any PC sound card	
Loudspeaker	Any PC speakers	More convenient if built into PC
Monitor	Any that supports above graphics driver	17-inch minimum recommended, the larger the better. (1024 x 768)
Pointing device	Mouse essential	Third button and wheels are supported. Touch screen option support
Printer	Optional	Any type
Parallel port	Optional	Required if parallel printer to be used
Serial ports	One RS232 per network	Isolated converter supplied for connection to fire alarm system
CDROM drive	Any	Required for installation of software and updates
Backup drive	CD Writer	To back up history
Note: Guide will be operating 24 hours a day for many years. It may be desirable to include on site PC maintenance as part of the package		

