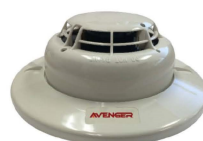




2018 - 2019
FIRE ALARM
PRODUCT BROCHURE





Avenger Systems is an independently owned fire detection and suppression company based in the United States and operating in most regions around the world. Avenger Systems is committed to providing our customers with the highest quality, cost-effective products, solutions and excellent customer service, while focusing on our customers, strategic partners, employees and state of the art technologies.

Avenger Systems is a progressive and reliable organization, providing superior fire detection and suppression solutions with outstanding customer support.

Our Vision: Avenger Systems was founded with the passion, vision and determination to provide our customers with superior-quality, cost-effective fire detection and suppression system solutions with exceptional customer support that exceeds most company's expectations. Our foundation is truly our people.

Our Culture: Avenger Systems corporate culture fosters creativity, hard work, collaboration and success.

Our Technology: Building on our past success in the fire and suppression markets, Avenger Systems utilizes state-of-the-art technologies to enable our customers to compete in all type of projects from small to the very large with software that is simple to use and yet powerful in its abilities.



Oasis

Analog Addressable Fire Control Panels
(Up to 16 loop)

Standard Features

- UL Listed (Tenth Edition)
- 2 to 8 loop or 2 to 16 loop versions
- 400mA loop current
- 4 programmable NACs; Class B or 2 Class A with internal synchronization
- 5.25 A or 10.25 A power supply
- 3 programmable inputs and 5 programmable relay outputs
- 7 inch, full-color resistive touch screen with intuitive user interface
- Up to 24 programmable soft "function keys"
- Up to 64 user login accounts
- Hard-wired fire and trouble routing inputs and outputs
- Modular and expandable electronics
- 400 subaddress points per loop (800 per loop module)
- Option to "invert" inputs and outputs
- 5000 programmable cause and effects; over 50,000 inputs and outputs
- Can be networked with programmable functionality
- Programming via USB port to PC or memory stick
- Graphical PC User Interface



Oasis Vision

Network Annunciator

Standard Features

- Full-color 7" (800 x 480 pixel) interface
- Replicates information displayed at the FACP
- Automatic display brightness adjustment
- Internal buzzer
- Connects via control panel network terminals
- Low current, 24V DC powered
- Configurable functionality
- Enable key-switch
- Sheet steel enclosure
- Surface or semi-flush enclosure options available



Supreme RS-H

Analog Addressable Fire Control Panels
(1 or 2 Loops) (Hochiki Protocol)

Standard Features

- One full SLC circuit expandable to two
- 3 programmable relays
- 5.25A power supply
- Large graphic display
- Real time clock
- Compatible with eMATRIX graphics annunciator
- Powerful, network wide cause and effects (500 total). Fully user programmable by point or zone.
- Can be networked with additional RS and/ or Supreme control panels
- Compatible with eVIEW Annunciator
- Programmable through a PC connection to the panel
- Same look and feel as Supreme range
- Stores 1000 last events in history log
- Model ranges include with or without a Dual-Line internal DACT
- Compact, stylish enclosure
- Available in Red or Gray
- 2 Programmable NAC circuits with internal synchronization support.

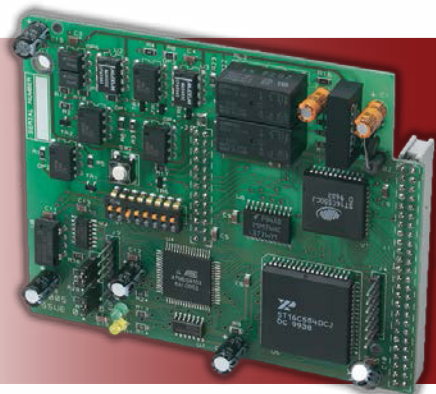


Supreme-H

Analog Addressable Fire Control Panels
(2 or 4 Loops)(Hochiki Protocol)

Standard Features

- UL 864 9th Edition listed
- Multi-Loop 2 Analog Addressable Loops Field upgradable to 4
- 127 primary points per loop
- Powerful, network wide cause and effects (500 total). Fully user programmable by point or zone.
- Up to 800 points per panel when using devices and sub-points
- Up to 10,000 ft. wiring length on SLC loop
- 64 Panels on a network
- Programmable through a PC connection to the panel, or through keypad
- Programmable on-board relays: 5
- Supervised Powered Outputs: 3
- Programmable Notification Appliance Circuits: 4
- Power per NAC: 1.6 Amps Max
- Programmable outputs on SLC loop
- Programmable Function button on front display
- Fire Drill button on front display
- Day and night sensitivity settings (user programmable)
- Power Supply: 5.25 Amp, regulated & integrated
- LCD Display: 8x40
- Zonal Mode: Annunciation by zone w/o individual relationships
- Panel Ring Modes: Common, Zonal, Stage 2
- NAC Outputs programmable as: Continuous, March or Temporal
- Program Cause and Effects: AND, OR, or Any Two (Cross Zone)
- Battery size: Up to 17 Ah in standard enclosure; up to 52 Ah with external cabinet
- Access levels: 3
- Access key switch: Yes
- Recognized for use in High Rise
- One man walk test – Fire Test Mode
- Available with semi-flush trim ring
- Available in Red or Gray



eVIEW

Analog Addressable
Serial Annunciator

Standard Features

- Available in Red or Gray
- Up to 15 annunciators can be connected to each Supreme or Supreme RS fire control panel
- Large liquid crystal display (240 x 64 pixels)
- High brightness LED indications
- Internal sounder
- Replicates all panel controls (Supreme)
- Simple, two-wire serial connection
- Small, Supreme style enclosure
- Removable electronics for easy installation
- 24V DC powered
- Low power consumption
- Multi language options
- Connection supervised by Supreme fire control panel
- Recess mounting using optional AS1173 kit

eNET

Supreme Networking

Standard Features

- Up to 64 nodes
- High integrity protocol when wired Class A
- Fully secure against short or open circuit faults
- Simple 2-wire loop connection
- Supports open ended networks for retrofit applications
- Network wide test and disablement functions
- Network wide cause and effect logic
- Flexible configuration options
- Panels configurable to act on network events or not as required



eMATRIX

Configurable Floor Plan Mimic
Annunciator

Standard Features

- Available in Red or Gray
- Up to 504 LED's can be controlled from any Supreme panel
- Select up to 12 printed colors (not including background and building outline)
- Available in a range of standard enclosures to suit any application
- Custom sized units can be made upon request
- Choice of Red, Green or Yellow LED's
- eMATRIX can easily be upgraded on site with minimal cost and effort
- UL 864 9th edition listed



AS2010-00

Fixed Temp/ Rate of Rise Heat Sensor

Standard Features

- Low Profile - Only 2.0" high, including base
- Simple and reliable device addressing method
- Uses the noise immune Digital Communication Protocol (DCP), which utilizes interrupts for fast response to fires
- Rate of Rise temperature threshold = 15°F/Min (determined by panel)
- Adjustable threshold temperature = 135°F - 190°F (determined by panel)



AS2012-00

Multi Criteria Sensor

Standard Features

- Low Profile - Only 2.0" high, including base
- Simple and reliable device addressing Automatic compensation for sensor contamination
- Built-in fire test feature
- Uses the noise-immune Digital Communication Protocol (DCP), which utilizes interrupts for fast response to fires
- Two built-in power/alarm LEDs
- Programmable non-polling LEDs
- Non-directional smoke chamber
- Vandal resistant security locking feature
- Removable smoke labyrinth for cleaning or replacement



AS2011-00

Photoelectric Smoke Sensor

Standard Features

- Low Profile - Only 2.0" high, including base
- Simple and reliable device addressing
- Automatic compensation for sensor contamination
- Built-in fire test feature
- Uses the noise-immune Digital Communication Protocol (DCP), which utilizes interrupts for fast response to fires
- Two built-in power/alarm LEDs
- Programmable non-polling LEDs
- Non-directional smoke chamber
- Vandal resistant security locking feature
- Removable smoke labyrinth for cleaning or replacement

AS2014-00

Multi-Criteria Sensor - Carbon Monoxide, COHb, Smoke, Heat (RoR)

Standard Features

- 16 Programmable Modes of Operation, based upon 9 different detection factors allow extreme application flexibility
- Simple and reliable device addressing method
- Automatic compensation for sensor contamination
- Built-in fire test feature
- Uses the noise immune Digital Communication Protocol (DCP), which utilizes interrupts for fast response to fires
- Dual programmable LEDs provide visual alarm / power indications
- Non-directional smoke chamber
- Pre-Alarm Function
- 10 year life span on CO sensor



AS6002-00 & AS6013-00

Fast Response Contact Modules

Standard Features

- Fast, reliable contact monitoring utilizing the Avenger Systems DCP (Digital Communications Protocol)
- Two different mounting configurations
- 127 devices can be used per DCP loop
- Bi-colored indicating LED provides module status (AS6002 only)
- Single input contact monitor
- Can be programmed to monitor Normally Open (NO) or Normally closed (NC) contacts
- Operates on Class A or Class B SLC loop



AS6024-00

Fast Response Contact Modules

Standard Features

- Single input contact monitor
- Fast, reliable contact monitoring utilizing the Avenger Systems DCP (Digital Communications Protocol)
- 127 devices can be used per DCP loop
- Can be programmed to monitor Normally Open (NO) or Normally Closed (NC) contacts
- Operates on Class A or Class B SLC loop
- Accepts up to 14 AWG wire

AS6020-00 & AS6021-00

with Short Circuit Isolator Fast Response Contact Modules (Class A Wiring)

Standard Features

- Single input contact monitor
- Fast, reliable contact monitoring utilizing the DCP (Digital Communications Protocol)
- Two different mounting configurations
- 127 devices can be used per DCP loop
- Bi-colored indicating LED provides module status (Both Models)
- Yellow LED indicates a short circuit condition (AS6021-00 only)
- Can be programmed to monitor Normally Open (NO) or Normally Closed (NC) contacts in Class B
- Operates on Class A or Class B SLC loop
- Accepts up to 14 AWG wire

AS6003-00

Short Circuit Isolator

Standard Features

- Can be placed at any location on SLC loop
- Checks the line for short circuit at power up; if the line is normal, the relay will be returned on. If a line short is detected, the relay remains open
- Indication of short circuit by a yellow LED



AS6040-00 & AS6041-00

with Short Circuit Isolator
Supervised Output Modules
(Class A Wiring)

Standard Features

- Built-in SCI circuitry (AS6041-00 only)
- Flexible application
- Quick response to emergency conditions
- Operation parameters are maintained by the module, and individual communication with the control system during emergency conditions is not required
- Contacts are rated 2.0 Amps @ 24VDC
- Programming is highly flexible providing 16 priority states plus zoning capability
- Programmed device output is turned off, silenced, or programmed to output the selected pattern



AS6007-00

Dual Input Monitor Module

Standard Features

- Fast, reliable contact monitoring utilizing the Avenger systems (Digital Communications Protocol)
- 127 devices can be used per DCP loop
- Bi-colored indicating LED provides module status
- Dual input contact monitor
- Can be programmed to monitor Normally Open (NO) or Normally Closed (NC) contacts
- Operates on Class A or Class B SLC loop
- Accepts up to 14 AWG wire
- Mounts to 4" square gang box



AS6052-00

Low Voltage Dual Relay Modules

AS6053-00

Low Voltage Dual Relay Modules w/ Isolator

AS6054-00

High Voltage Dual Relay Modules

AS6055-00

High Voltage Dual Relay Modules w/ Isolator

Standard Features

- Provides two independently configurable Form C contacts per address
- Contacts are rated as follow:
AS6052/ AS6053: 2A @ 30 VDC / 0.5A @ 120 VAC
AS6054/ AS6055: 8A @ 30VDC / 4.8A @ 250 VAC
- Up to 127 devices can be used on each SLC loop
- Visible Bi-colored LED is software controlled and can be programmed to blink red or green when polled. The LED can be latched on when activated. (For All Models)
- Yellow LED indicates a short circuit condition (AS6053 & AS6055 only)
- Programming is highly flexible providing 16 priority states plus zoning capability
- Operates on Class A or Class B SLC loop





Supreme CP

Conventional Fire Control Panels

Standard Features

- UL864 approved
- Two, four or eight initiating circuits
- Initiating circuits individually configurable as Fire, or Supervisory
- Two 2.5A Notification Appliance Circuits
- 4.0 Amps total NAC power available
- Selectable NAC sync protocols
- 5 Amp power supply
- Alarm verification selectable by zone
- Resettable Aux power output rated at 0.3A
- Aux power configurable to power off on Fire condition
- Fire, Trouble and Supervisory relays
- Single person walk test function
- Many advanced configuration options
- 24 hours standby with 7 Ah batteries
Maximum battery size 12Ah



Supreme XT

Releasing Fire Control Panels

Standard Features

- UL 864 and FM approved
- Three detection zones as standard
- Any single zone or any combinations of zones can be configured to release
- Configurable first stage NAC delays
- Configurable detection delays
- Zero time delay upon manual release option
- Non-latching zone input option to receive signals from other systems such as aspirating equipment
- Configurable releasing delays up to 60 seconds in 5 second steps
- Configurable releasing duration up to 5 minutes in 5 second steps
- Countdown timer shows time remaining until release
- Supports up to seven, four wire status indicators
- Built in Extract Fan control
- Compatible with conventional detectors from Apollo, Hochiki America and System Sensor

AS2042-00

PHOTOELECTRIC SMOKE DETECTOR

Standard Features

- UL Listed.
- Computer-designed non-directional smoke chamber
- 360° view of detector status LED
- Low profile, 2" high (with base)
- 2 wire base compatibility
- Highly stable operation, RF/Transient protection
- Low standby current, 59µA at 24VDC
- One built-in power/sensitivity supervision/ alarm LED
- Automatic Sensitivity window verification function meets outlined requirements in NFPA 72, Chapters 2 & 7, Inspection, Testing and Maintenance



AS2020-00 / AS2021-00

FIXED TEMPERATURE AND RATE OF RISE
HEAT DETECTOR

Standard Features

- Choice of fixed temperature / rate-of-rise 135°F or 190°F heat detector.
- UL Listed spacing up to 60' by 60'
- 2 or 4 wire base compatibility, relay bases available
- Highly stable operation,
- RF/Transient protection
- Low standby current, 35µA nominal
- Two built-in power/alarm LED's for 360° viewing
- Fully electronic operation
- Power/alarm LED's confirm detector status
- Compatible with Avenger detectors and their bases

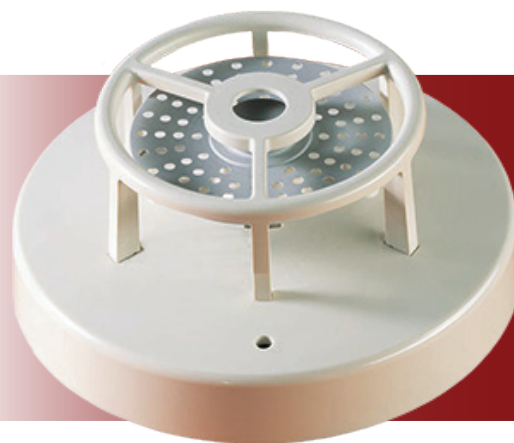


AS2036-00 / AS2037-00

FIXED TEMPERATURE HEAT DETECTOR

Standard Features

- UL Listed, CSFM Approved
- Available models: 135°F fixed temperature (AS2036-00) or 190°F fixed temperature (AS2037-00)
- UL Listed ceiling spacing of 50 feet by 50 feet
- Self-restoring
- Contact rating of 100mA
- Latching LED base available



AS3031-10

Single Action w/ Hex Screw (H)

AS3032-10

Single Action w/ Key Lock (H)

AS3029-10

Dual Action w/ Key Lock (H)

Standard Features

- UL Listed
- Metal construction
- Bi-colored status LED indicates Standby and Alarm conditions
- Single Action and Dual Action with hex Screw or key lock
- Enclosed switch with glass rod (included)
- Terminals accept up to 14AWG wire
- Surface mount back box available





AS4000-10

Low Profile Evacuation Horn

AS4001-10

Low Profile Evacuation Strobe

AS4002-10

Low Profile Evacuation Horn / Strobe

Standard Features

- UL 464, UL 1971 Listed.
- Nominal voltage 24VDC
- Units have field selectable candela options of 15, 30, 60, 75, and 110 candela
- Super -Slide™ Bracket - Ease of Supervision Testing
- Checkmate™ - Instant Voltage Verification
- Unit Dimensions: 5" high x 4.5" wide x 2.5" deep
- Synchronize strobe and/or horn with Avenger Series Control Module
- Prewire entire system, then install signals
- Lower installation and operating costs
- Input terminals 12 to 18 AWG
- Switch selection for high or low dBA
- Switch for chime, whoop, mechanical and 2400Hz tone
- Tamperproof re-entrant grill
- Switch for continuous or temporal 3 (not available on whoop tone)
- Surface mount with the AS4005 (Avenger Surface Mount Box)
- Silence horn while strobes remain flashing
- Wide voltage ranges 16-33VDC or FWR



AS4003-10

Ceiling Mount Selectable Strobe

AS4004-10

Ceiling Mount Selectable Horn/Strobe

Standard Features

- UL 464, UL 1971 & BFP Listed
- Nominal Voltage 24 VDC
- Tamperproof
- Field Selectable Candela options of 15, 30, 75, 95, 115 & 150
- Super-Slide™ Bracket - Ease of Supervision
- Testing Checkmate™ - Instant Voltage Verification
- Unit Dimensions: 6" x 2.6"
- Switch Selection for High or Low dBA
- Switch Selection for 2400Hz or Mechanical
- Tone Switch Selection for Continuous or Temporal 3
- Tamperproof Re-entrant Grill
- Surface Mount with the Ceiling Surface Mount Box
- Silence Horn While Strobes Remain Flashing



AS4006-10

Low Profile Evacuation Outdoor Strobe

AS4007-10

Low Profile Evacuation Outdoor Horn/ Strobe

Standard Features

- UL 464, UL 1638 Listed.
- Included with the Avenger Series AS4006-10 and AS4007-10 is the AS4008-10 outdoor enclosure.
- The enclosure is made of high quality Lexan material, providing protection from weather related conditions and allowing the necessary full candela output.
- The Outdoor Series is equipped with the 4" mounting plate which incorporates the Super-Slide™ feature that allows the installer to easily test for supervision.



Avenger Systems, LLC
Address: 11586 Zagarolo Lane, Las
Vegas, NV, 89141 USA
International Phone: (702) 850-8503
e-mail: sales@avengersystems.com