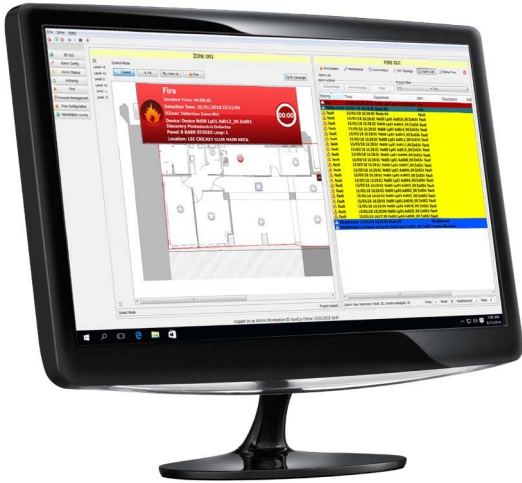


L@TI-VIEW

VISUAL FIRE ALARM SYSTEM MANAGEMENT SOFTWARE



Product Overview

L@ti-View can automatically switch to the area on the site map where a fire has been activated to quickly view an event and begin immediate investigation. With L@ti-View, operators and users are alerted to an event as soon as it occurs and are directed to the location of the event.

A Maintainer's area provides dedicated functions for a fire alarm system's maintenance team. A comprehensive list of all fire devices along with their statuses, cause and effect rules, and integration settings allows operators to quickly view a device, make changes, and disable devices all from one workstation. For all fire devices on the site, a Maintainer's log shows operators and engineers a view of all recorded maintenance activities, previous faults and status histories to help speed up maintenance procedures and device

Ordering Codes

LEUS2004	L@ti-View - Supreme / Supreme RS - 4 Panel License
LEUS2016	L@ti-View - Supreme / Supreme RS - 16 Panel License
LEUS2064	L@ti-View - Supreme / Supreme RS - 64 Panel License
LVUS2004	L@ti-View - Oasis - 4 Panel License
LVUS2016	L@ti-View - Oasis - 16 Panel License
LVUS2128	L@ti-View - Oasis - 128 Panel License

Standard Features

- Supports dual screens
- Reports configuration mismatch errors
- Powerful event log filtering and reporting
- Manages the state of the fire system
- programmable macro buttons to perform panel control operations
- Full map navigation
- Device analog value reporting
- Performs device and zone disablements / enablements

Permissions

L@ti-View enables permissions to be given to different levels of users. There are four default user accounts configured upon installation.

Additional accounts can be created by the administrator. These user accounts use default permissions groups, but user accounts and groups can be cloned and edited per site requirements. The default accounts are:

- **Operator:** Ordinary users of the system.
- **Manager:** Users who supervise the operators and as such have additional permissions and access. 2D GUI editing permitted.
- **Maintainer:** Users who maintain the system. Allows analog value polling, control of outputs, fire panel operations, fire zone testing and additional maintenance facilities.
- **Administrator:** Users who are permitted to administer the system. Full system access permitted.